

BENCHMARK

TOP OF FIRE HYDRANT #72, NORTH SIDE
DAVIDSON ±15' WEST OF INT W/LAKE MARY
EL = 8193.49

SPIRAL CURVE DATA

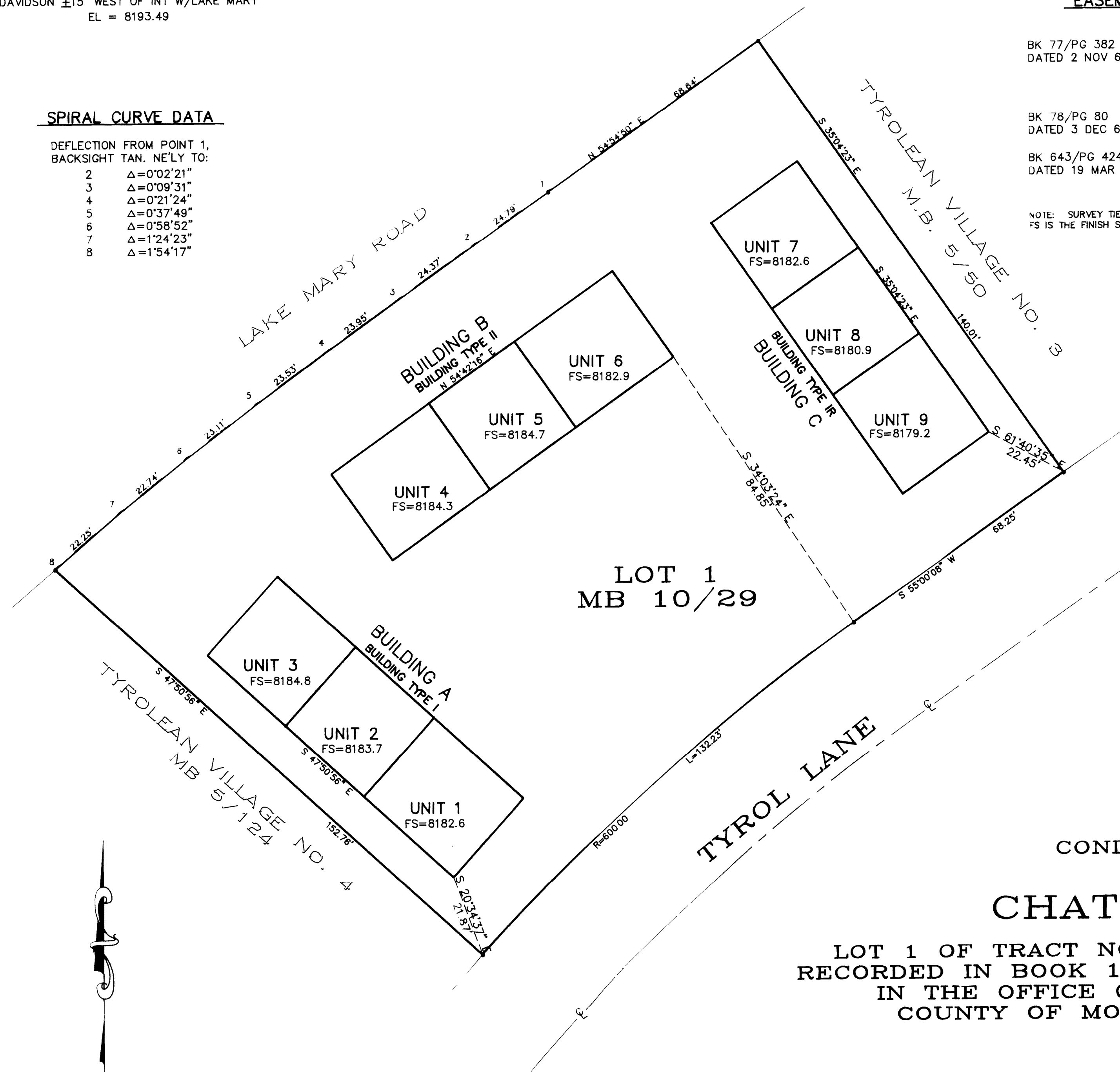
DEFLECTION FROM POINT 1,
BACKSIGHT TAN. NE'LY TO:

2	Δ=0°02'21"
3	Δ=0°09'31"
4	Δ=0°21'24"
5	Δ=0°37'49"
6	Δ=0°58'52"
7	Δ=1°24'23"
8	Δ=1°54'17"

EASEMENT/RECORD INFORMATION

- BK 77/PG 382 COVENANTS, CONDITIONS AND RESTRICTIONS (CC & R's)
DATED 2 NOV 65
- EASEMENT FOR PUBLIC UTILITIES RESERVED IN ABOVE CC & R's,
LOCATION NOT DISCLOSED
- BK 78/PG 80 MODIFICATION OF CC & R's
DATED 3 DEC 65
- BK 643/PG 424 EASEMENT FOR UNDERGROUND AND OVERHEAD POWER LINES TO SCE
DATED 19 MAR 92 OVER THE COMMON AREA OF LOT 1, TRACT NO. 36-172, MB 10/29

NOTE: SURVEY TIES SHOWN ARE TO THE OUTSIDE FACE OF FOUNDATION;
FS IS THE FINISH SURFACE ELEVATION AT THE ENTRANCE TO THE UNIT.



CONDOMINIUM PLAN
FOR
CHATEAU TYROL

LOT 1 OF TRACT NO. 36-172 AS SHOWN ON MAP
RECORDED IN BOOK 10 OF TRACT MAPS AT PAGE 29
IN THE OFFICE OF THE COUNTY RECORDER,
COUNTY OF MONO, STATE OF CALIFORNIA

SCALE 1" = 20'